

# Everything for timber

With a little help from Posch. 6 great ideas for 6 times more convenience Bundling device, conveyor belts, LogFix, PackFix, Profi-Häcksler and HackBlitz make the work after splitting so much easier! Conveying, loading, packing, shredding – there is no faster or easier way to do it!

## Advantages at a glance

### Conveyor belts:

- Different lengths
- Inclination can be adjusted

### Bundling device:

- Convenient bundling of billets
- Easy to handle

### LogFix:

- for top-quality firewood
- versatile and flexible

### PackFix:

- Automatic packing and arranging of billets
- Standard filling volume of 1 stacked m<sup>3</sup> of wood



### Watch Posch equipment in action:

Ask for our product DVD or simply watch our film on the Internet at: [www.posch.com/video](http://www.posch.com/video)







PackFix 1.0

POSCH

POSCH

POSCH





Billets Bundling Device

## Billets Bundling Device

The ideal accessory for all splitters.

Article no.	Description	Weight	
M7200	Billets bundling device with three-point linkage cat. I + II Stop for even filling	~ 230	

The handy billets bundling device arranges metre-long and short logs ready for storage and transport. Four standard belts bundle the short timber in two bundles each of 50 cm billet length. The bundle is then lowered

by means of the tractor's hydraulic system, and after the locking lever has been opened, the bundled timber rolls out. Volume at a billet length of 1m: approx. 1 stacked cubic metre.

### Accessory equipment for billets bundling device

Article no.	Description
F0001829	Wooden stop (noise reducing)

### Bundling system – composite band

Article no.	Description
F0002727	<b>Composite set complete</b> including: • Tensioning device • Band dispenser, mobile • Composite strap 19 mm wide, 2 reels of 700 m length • 1,000 closing buckles galvanised
F0002797	<b>Composite set without band dispenser</b> including: • Tensioning device • Composite strap 19 mm wide, 2 reels of 700 m length • 1,000 closing buckles galvanised
F0002557	Band dispenser set, see picture ❶
F0002698	Tensioning device (not available for band dispenser set F0002557!)
Z9700051	Tensioning device
Z9700056	Band dispenser, mobile
Z9700063	Composite strap 19 mm wide, 2 reels of 700 m length. Black plasticized textile strap; tailored for sharp-edged products and use at low temperatures, high UV-resistance, high tear strength.
Z9700080	Closing buckles galvanised (1,000 pcs./pack) for composite strap (Z9700063)



Bundling system with steel band.



Bundling system with composite band  
❶ Dispenser for composite band (M7200 + F0002557 + F0002797).

## Bundling system – steel band

Article no.	Description
Z9700010	<b>Steel band set complete</b> including: <ul style="list-style-type: none"> <li>• single-part tensioning and closing device</li> <li>• portable band dispenser</li> <li>• 240 m steel band blank 0.5 mm</li> <li>• Special steel band scissors</li> <li>• 1,000 closing sleeves</li> </ul>
Z9700050	Tensioning and closing device
Z9700055	Band dispenser, portable
Z9700060	240 m steel band blank 0.5 mm
Z9700065	Special steel band scissors
Z9700070	1,000 closing sleeves



Comfort bundling equipment  
with Fybron pressed-yarn  
 1 Dispenser  
 2 Hand-operated winch

## “Comfort” Billets Bundling Device

Bundling of billets made easier.

Article no.	Description	Weight
M7205	“Comfort” billets bundling device with 2,000 m Fybron cord	~ 208

The Comfort billets bundling device bundles metre-long logs conveniently and at a favourable price (approx. 0.9 €/bundle). The hand-operated winch ensures ease of tensioning and tightening. The pressed-yarn cord is easy

to handle and unproblematic as far as disposal is concerned. Swift binding guaranteed thanks to the binding tube, without the need for additional tools.

### Technical data:

- Wooden stop – noise reducing
- Hand-operated winch
- Binding tube
- Length: 1,600 mm, width: 1.550 mm, height: 1,650 mm
- Three-point linkage cat. I + II

## Fybron cord for bundling system

Article no.	Description
F0003171	2 reels of Fybron pressed-yarn approx. 1,040 to 1,050 m/reel (approx. 90 bundles)

# Conveyor belts 4/5 m

For loading your firewood.



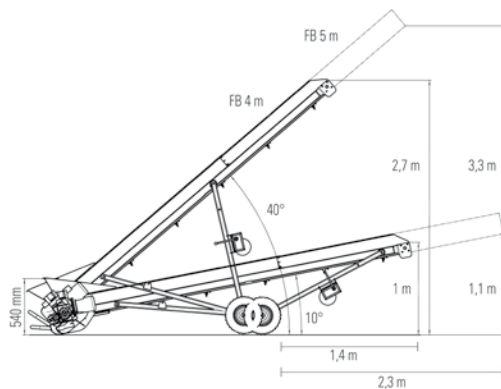
Article no.	Type	Drive	Conveyor belt length m	Weight kg	
M8150	4m E-400V	0.75 kW electr. motor 400V, S6, CEE 16A	4	~ 210	
M8152	4m E-230V	0.75 kW electr. motor 230V, S6	4	~ 210	
M8100	4m PS	Tractor hydraulics, hydraulic sleeve size 3, capacity 16 l/min – max. 130 bar	4	~ 209	
M8155	5m E-400V	0.75 kW electr. motor 400V, S6, CEE 16A	5	~ 235	
M8157	5m E-230V	0.75 kW electr. motor 230V, S6	5	~ 235	
M8105	5m PS	Tractor hydraulics, hydraulic sleeve size 3, capacity 16 l/min – max. 130 bar	5	~ 230	

This is how to really get your firewood moving! The inclination of the conveyor belts can be adjusted by means of a hand-winch. The pneumatic tires and the standard tractor

drawbar (including drawbar, reflectors and sticker 6 km/h) make the conveyor belts fit for effortless transportation.

## Technical data:

- Length of conveyor belt 4 or 5 m
- Inclination of conveyor belt can be adjusted between 10° and 40° by means of a manual winch
- Width of conveyor belt: 300 mm
- Ejection height 4 m model: 1.0 to 2.7 m, ejection height 5 m model: 1.1 to 3.3 m
- Speed of conveyor belt: 50 cm/s
- Pneumatic tires Ø 400 mm



# Conveyor belts 6/8 m – Special

For loading your firewood; for Spaltfix models.



## Conveyor belt 6 m

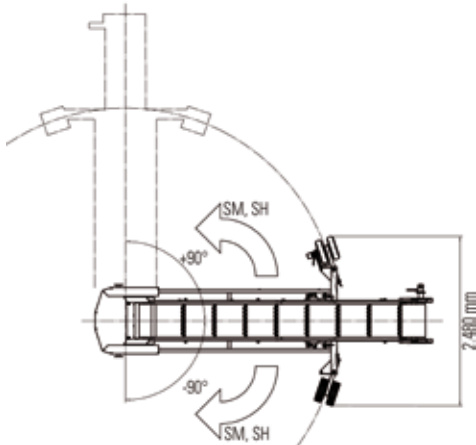
Article no.	Type	Drive	CB inclination mechanical adjustment in steps	CB inclination infinitely adjustable with hydraulic system	CB PIVOTING mechanical	FB PIVOTING hydraulic
M8132S	6 m E4-400V manual	4 kW electr. motor 400V, S6, CEE 16A	x		x	
M8165S	6 m E4-400V hydraulic	4 kW electr. motor 400V, S6, CEE 16A		x		x
M8115S	6 m PS hydraulic	Tractor hydraulics, hydraulic sleeve size 3, max. capacity 16 l/min		x		x

SPECIAL

## Conveyor belt 8 m

Article no.	Type	Drive	CB inclination mechanical adjustment in steps	CB inclination infinitely adjustable with hydraulic system	CB PIVOTING mechanical	FB PIVOTING hydraulic
M8142S	8 m E4-400V manual	4 kW electr. motor 400V, S6, CEE 16A	x		x	
M8175S	8 m E4-400V hydraulic	4 kW electr. motor 400V, S6, CEE 16A		x		x
M8125S	8 m PS hydraulic	Tractor hydraulics, hydraulic sleeve size 3, max. capacity 16 l/min		x		x

SPECIAL

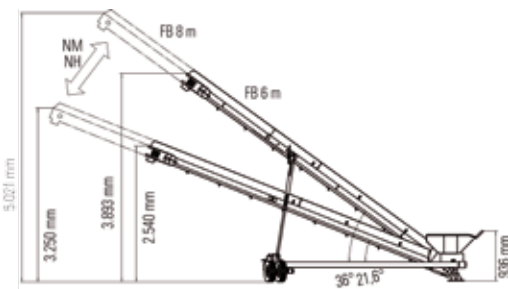


The conveyor belt with a belt length of 6 and 8 m is an accessory for the Posch-Spaltfix series. Height and angle of inclination of the belt

are adjustable. The inclination of the belt is mechanically adjustable in steps and infinitely adjustable by means of the hydraulic system.

### Technical data:

- Length of conveyor belt 6 or 8 m
- Width of conveyor belt: 550 mm
- Speed of conveyor belt: 70 cm/s
- Pneumatic tires Ø 400 mm



## Accessory equipment for conveyor belts 6/8 m – Special

Article no.	Description
F0002427	Support wheels left and right for transportation, only available for models with pivoting mechanism
F0002425	Drawbar, available only for models with pivoting mechanism
F0002426	Flow divider for speed adjustment of models with HP drive

SPECIAL



# LogFix

For cleaning of logs



LogFix E1,5-400 with standard waste funnel

Article no.	Type	Drive	Weight kg
M8185RC	E1,5-400	1.5 kW e-drive 400 V, S6, CEE 16A, with waste funnel With radio remote control to switch equipment on and off.	~ 740
M8186RC	E1,5-230	1.5 kW e-drive 230V, S6, with waste funnel With radio remote control to switch equipment on and off.	~ 740
M8187RC	PS	Tractor hydraulics, hydraulic sleeve size 2, capacity approx. 15 l/min – 150 bar with waste funnel	~ 750
Z	Access guard for screen drum; no waste funnel (option of filling a PackFix drum, for example)		~ 60

SPECIAL

The Posch LogFix separates billets from splinters and provides high-quality firewood instantly. The rotating rollers remove chips, splinters of bark and wood from the firewood. The waste falls downwards. As the rollers work very slowly at only 50 rpm, the LogFix is very quiet. Underneath the screen, there

is a funnel from where the waste reaches an optional conveyor belt or container (w 1.25 m x d 1.25 m x h 1 m max.; and with option Z w 1.25 m x d 1.25 m x h 1.6 m). Radio remote control for convenient starting and stopping of the screen.

### Technical data:

- Screen width: 54 mm, 7 rollers
- Screen: l x w: 1,300 x 750 mm,  
Height of transfer of clean billets: 1,950 mm
- Filling height: 2.5 min.
- Dimensions: l x w x h: 2,400 x 1,600 x 2,300 mm

## Accessoires pour LogFix

Article no.	Description
F0003402	Retrofitting of access guard for screen drum with e-drive, weight: ~ 170kg
F0003403	Retrofitting of access guard for screen drum with PS drive, weight: ~ 170kg

SPECIAL



LogFix with optional access guard (Z): High-quality firewood in an instant. Radio remote control for convenient starting and stopping the LogFix.



The rotating rollers remove chips and bits of bark from the firewood.



An optional conveyor belt underneath the screen moves the waste to a container. Here, the clean billets fall into a PackFix filling drum.



# PackFix

Packaging for optimum drying, storage and delivery of firewood.

Article no.	Type	Drive	Frame	Weight kg	
M7320	Light	One filling drum without frame, electricity supply 230V. Installation height: 430-440 cm	no	~ 297	
M7330	Single	One filling drum with frame, electricity supply 230V	yes	~ 338	
M7335	Duo	Two filling drums for continuous filling, with frame, electricity supply 230V	yes	~ 649	

SPECIAL

For accessory equipment refer to page 120.

The filling drum is filled via a conveyor belt with billets. Once the drum is full, a rotating arm installed on the side of the equipment starts wrapping the filling drum (starting at the bottom) with a net that was attached to the pallet beforehand. At the same time, the filling drum is slowly pulled upward so that the net, that is permeable to air, is wrapped around the billets directly. When all the timber is wrapped, the net is cut and tied at the top.

### Quick-change system:

The filling drum can be detached from the frame, which means that several filling drums can be filled - irrespective of the location of the frame. The full drums are then transported to the frame and wrapped with the net.

### Technical data:

- For billets up to 50 cm long
- Filling drum volume 1.63 m<sup>3</sup> = 1.6 loose cubic metre = 1.0 cubic metre of timber
- Filling drum: Ø 1.20 m, height = 1.45 m
- Up to three packs can be stacked on top of each other

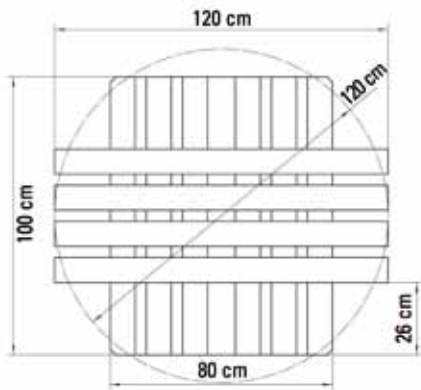




## Accessory equipment for PackFix

Article no.	Description
F0002579	Additional filling drum for PackFix with quick-change system 1.6 loose m3
F0002472	Filling chute "Single/Duo" for filling PackFix with rigid conveyor belt (not available for M7320)
F0002548	Frame with feet for PackFix Single
Z9900500	Round bale net 0.6 m x 1,800 m (for 55 to 60 units) 1 round bale net is included in the scope of delivery of the machine.
Z9900501	Round bale net 0.60 m x 1,800 m, 1 pallet = 64 reels

SPECIAL



### Pallet variants:

- Ideal solution:
  - Pallet can be wrapped: single-use pallet 100 x 80 cm + 4 boards of 120 cm length (see drawing on the left)
- Other options without wrapping the pallet:
  - Euro pallet 120 x 80 cm + 4 boards of 120 cm length
  - Single-use pallet 120 x 120 cm (no additional boards needed)



The rotating arm wraps the filling drum with the round bale net.



After the filling drum has been fully pulled away towards the top, the finished pack of timber is ready for transport.



Filling chute "Single/Duo" for charging the PackFix by means of the rigid conveyor belt.



PackFix with quick-change system: It takes but a twist of the hand to detach the filling drum from the frame.

# PackFix Hydro

Added convenience for packing firewood.

The PackFix Hydro drum is lifted by means of a hydraulic cylinder. Lifting, lowering and rotating of the pivoting arm is also done hydraulically. The drum is easier to adjust underneath the wrapping arm, and vertical alignment of the machine with the feet is

also easier.

There are three PackFix Hydro models:

- stationary
- mobile
- universal (stationary + mobile)



Stationary PackFix Hydro with base frame GH

## PackFix Hydro stationary

Article no.	Type	Drive	Weight kg	
M7350	PS	Tractor hydraulics, max. pump capacity 10 l/min, max. 150 bar, hydraulic plug size 3	~ 590	SPECIAL
M7355	E3-400	3 kW electr. motor 400V, S6, CEE 16A	~ 610	
M7357	E3-230	3 kW electr. motor 230V, S6	~ 610	
M7360	B2,6	2,6 kW Honda petrol engine consumption: 0,5-0,7 l/h, tank capacity: 0,77 l	~ 610	
M7351	PZ	Connectable pto pump max. 430 rpm	~ 610	
GH	Frame for charging with pallet truck instead of standard base frame. Level ground required			
STH	Tilting table incl. two filling drums and hydraulic drive from the control panel, including installation (instead of standard base frame - for stationary operation only!)			

For accessory equipment refer to page 122.



Stationary PackFix Hydro with adjustable base frame, comes as a standard.



Stationary PackFix Hydro with base frame for pallet truck (option GH).

- For stationary operation
- Filling drum Ø 120 cm with quick-change system
- Charging via tractor with front loader, fork-lift truck, farm wheel loaders, etc.



Time saved: While one drum is being filled, the timber in the second drum can already be packed and transported away. And the next drum is ready for filling.



PackFix Hydro mobile

## PackFix Hydro mobile

Article no.	Type	Drive	Weight kg	
M7340M	PS	Tractor hydraulics, max. pump capacity 10 l/min, max. 150 bar, hydraulic plug size 3	~ 615	
M7341M	PZ	Connectable pto pump max. 430 rpm	~ 635	

- Mobile operation
- Filling drum Ø 120 cm with quick-change system
- The timber packs can be conveniently wrapped on the tractor and transported with it.
- Hydraulic top-link recommended for tractor!

## Accessory equipment for PackFix Hydro

Article no.	Description
F0002876	Flow divider for models driven by tractor hydraulics to adjust oil levels (packing speed) irrespective of tractor speed
F0002877	Pallet for, to be used like PackFix Hydro mobile (standard with PackFix Hydro mobile and universal)
F0002878	Base frame for charging with fork lift, front loader, farm wheel loader, etc. (standard with PackFix Hydro stationary and universal)
F0002880	Base frame for charging with pallet truck
F0002579	Additional filling drum for PackFix with quick-change system 1,6 loose m <sup>3</sup>
Z9900500	Round bale net 0.6 m x 1,800 m (for 55 to 60 units) 1 round bale net is included in the scope of delivery of the machine.
Z9900501	Round bale net 0.6 m x 1,800 m, 1 pallet = 64 reels
F0003364	Tilting table for retrofitting including two filling drums and hydraulic drive from the control panel for all PackFix Hydro models; installation not included. Note: only for stationary application



The new hydraulic tilting table ensures higher efficiency.



All that is needed to detach the filling drum from the frame is a simple turn of the hand.



Simple control from control panel.



## PackFix Hydro universal

Article no.	Type	Drive	Weight kg	
M7344	PZE	<ul style="list-style-type: none"> <li>• connectable pto drive max. 430 rpm</li> <li>• 3 kW electr. motor 400V, S6, CEE 16A</li> </ul>	~ 680	
GH		Frame for charging with pallet truck instead of standard base frame. Level ground required		

SPECIAL

- Mobile and stationary operation
- The machine for universal applications and shared operations
- Filling drum Ø 120 cm with quick-change system



**PackFix Hydro universal**  
(PackFix Hydro stationary + PackFix mobile)



**PackFix Hydro universal**  
with base frame for pallet truck (M7344GH)



ProfiHäcksler 300K1 E7,5-H



ProfiHäcksler 300K1 B9,7-H

# ProfiHäcksler 300K1

The professional equipment for shredding of waste and preparation of compost.

Article no.	Type	Drive	Weight kg
M3251S	E7, 5-H	7.5 kW electr. motor 400V, S6, CEE 16A	~ 192
M3200S	Z-D	Tractor, power consumption 7 kW	~ 198
M3261S	B9,7-H	9,7 kW (13 PS) 4-stroke Briggs & Stratton Vanguard petrol engine, hand-starter	~ 172

For optimum waste shredding and compost preparation. Chops organic material, such as shrubs, bushes, wreaths, garden and sawmill waste. Improved defibration for extremely

fast rotting. The intake belt transports the material automatically and continuously to the hammer drum where it is chopped.

### Technical data:

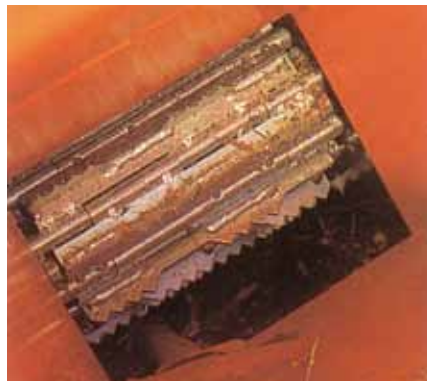
- Wood up to approx. 5 cm Ø
- 27 rotating mallets
- Spring-loaded intake belt
- Overload clutch
- Mallets with cutting edge that can be used on both sides as a standard
- E- and B-drive: mobile on two solid rubber wheels Ø 300 mm
- Driven by tractor: universal-joint shaft required, three-point linkage cat. I

## Accessory equipment for ProfiHäcksler 300K1

Article no.	Description
F0002179	Hour counter for machines with e-drive
F0001806	Hour counter for machines with Z-drive (Reed contact) with speed indicator
F0001482	Hour counter for machines with petrol engine
F0002660	Set of mallets with cutting edge (27 pc.)
Z1201760	Mallet with cutting edge (1 pc.)
Z2000638	Walterscheid universal-joint shaft with overload clutch



Shredded material.



Spring-loaded intake belt.



This is how ProfiHäcksler 300K1 works.



HackBlitz 500 Z-W-D

# HackBlitz 500

The sturdy professional equipment for effortless shredding of tree cuttings, waste wood, etc.

Article no.	Type	Drive	Weight kg
M4605	Z-W-D	Tractor, power consumption 35 kW, hydraulically driven upper intake roller, (forward and return movement)	~ 340

The sturdy Hackblitz 500 chops branches and twigs and waste wood. The material to be chopped is put into the hopper and evenly drawn in by the intake roller. The specific inclination of the hopper makes fast and smooth intake of material possible. The geometry of

the chopping knives mounted on the chopping disk ensures rational shredding. The counter-blade is adjustable for perfect shredding results. The chopped material is ejected at a height of 2.2 m.

### Technical data:

- Wood up to approx. 10 cm Ø
- Cutting disk 500 mm Ø
- 160 mm wide and 200 mm high hopper opening
- Pivoting, 2.2 m high ejection tube
- Three-point linkage cat. I + II

## Accessory equipment for HackBlitz 500

Article no.	Description
F0001516	Set of chopping knives (2 pcs.) with 6 bolts
Z2000660	Walterscheid universal-joint shaft with overload clutch max. 900 Nm
Z2000646	Walterscheid universal-joint shaft max. 900 Nm (overload clutch and freewheel for tractor with hydraulic pto clutch)



Chopped material.



The intake roller takes the material in.



HackBlitz500 with pto drive in transport position.